

***SPIRIT 14* and Microsoft Vista**

Notes on the installation and operation



Software Technologie GmbH
Friedrichstraße 30
67433 Neustadt/Weinstraße

Important:

***SPIRIT* has not yet been released for the operation under Microsoft Vista!**

Before the installation

Older Marx dongles (0Bxxx) can not be used with Microsoft Vista! There are no drivers for these dongles, which are suitable for Microsoft Vista.

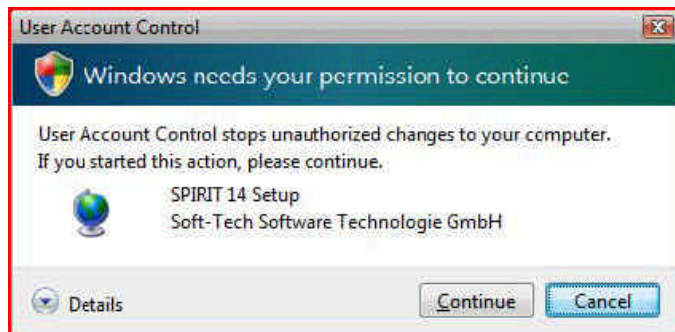
Aladdin dongles (Axxxx) can still be used. However, the latest Aladdin drivers for Microsoft Vista are required (www.aladdin.com).

Do not plug the dongle in before the software has been installed. First install *SPIRIT*, then install the dongle driver if necessary. Reboot the computer and then plug the dongle in.

Installation

In Microsoft Vista the folders „Program Files“ and „Windows“ are write-protected during operation.

When you start the installation, you will be prompted to continue or cancel the installation. This prompt will be displayed for every installation to protect your computer from unauthorized installations.



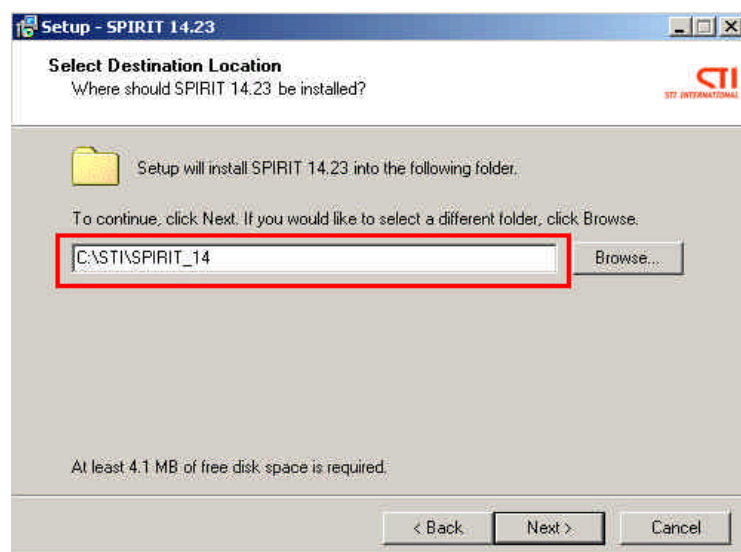
Click „Continue“ to proceed with the installation.

SPIRIT 14 saves a lot of information in proprietary program folders. This was very advantageous because all vital data for the operation of the software was concentrated in one location. Because Microsoft Vista now controls the „Program Files“ folder it is no longer possible to organize the data with this structure.

...

All data saved by *SPIRIT* would automatically be moved to a „User area“ defined by Microsoft. There would only be links to this data in the individual folders.

It therefore no longer makes sense to install *SPIRIT* in the „Program Files“ folder; it has to be installed in a separate folder, eg.: „C:\STI\SPIRIT_14“.



Starting the program

Generally you require administrator rights or access to an account with administrator rights to start *SPIRIT*! Before you start the program for the first time, you should assign administrator rights to the file „SPIRIT14.exe“. *SPIRIT* will not start correctly if these settings have not been defined.

Perform the following steps:

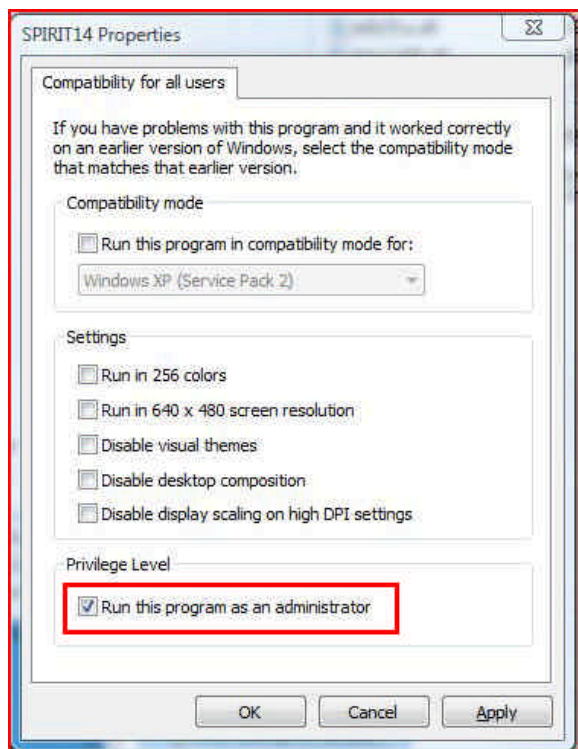
Open the Explorer window (right mouse click on the Start button, then click on Explorer).

Go to the *SPIRIT* installation folder (C:\STI\SPIRIT_14\100_Systemfiles) and right mouse click on the file SPIRIT14.exe. Select „Properties“.

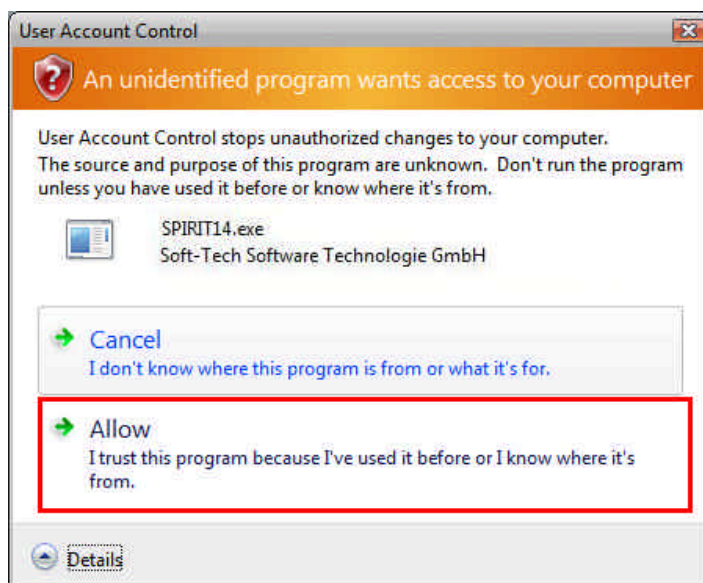
In the „Properties“ window select the „Compatibility“ tab to make the necessary settings.

Check the option „Run this program as an administrator“ under the Privilege group and exit with „OK“.

...



When you start the program you will be informed that "The source of the programs is unknown". Select „Allow“ to authorize *SPIRIT*.



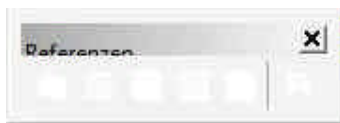
License files

The *SPIRIT* installation will install a program which enables you to copy license files comfortably (without explicit knowledge of the system).

This program also works with Microsoft Vista but after the copy procedure a message will be displayed that the installation of the program „InstLic.exe“ was not correct. You can simply ignore this message.

Screen display

On some computers the buttons and labels on the *SPIRIT* screen will not be displayed correctly.



In this case you should change the color display in Microsoft Vista from 32 Bit to 16 Bit.

Thumbnails

The current installation procedure does not provide the necessary settings for the display of thumbnails under Microsoft Vista. For this reason a preview for drawings, symbols and building components is not possible!

File location when the original files are stored in the directory

C:\Programme\ST\SPiRiT_14

Microsoft Vista stores all saved files in the directory:

C:\Users\Username\AppData\Local\VirtualStore\Program Files\ST\SPiRiT_14\

This also applies to the license file *SPIRIT.slf*!

When you double-click on a license file, LicCopy will copy the file to the folder 100_SystemFiles – this access will be re-routed!